

salesforce

 **TARGETRECRUIT**



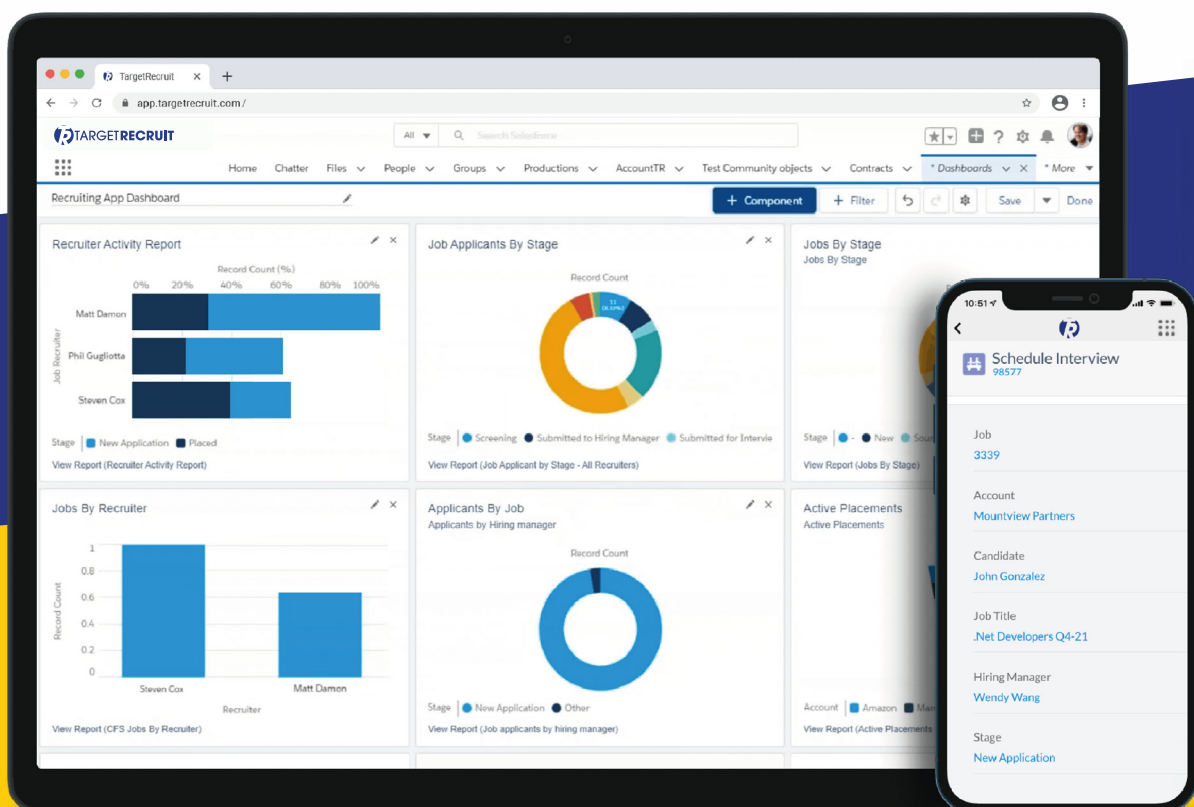
TargetRecruit + Salesforce

Our Commitment to Empowering Data Protection and Security

TargetRecruit is an enterprise software solution for staffing and recruiting that is completely built on the Salesforce platform. Leveraging the underlying architecture provided by Salesforce for a variety of functions including security, scalability, configuration, and customization, we have modernized the recruiting lifecycle by powering a comprehensive applicant tracking system (ATS) weaved directly into an ecosystem of integrated apps.

As an original equipment manufacturer (OEM) for Salesforce, we are subject to rigorous security reviews and must maintain regulatory compliance to be listed on the Salesforce AppExchange, an online marketplace built by Salesforce which offers ready-to-install software apps. As an official AppExchange vendor, Salesforce continually tests the safety and security of our software solution, specifically how well it safeguards customer data.

At TargetRecruit, we prioritize the protection of sensitive information, and we are proactive in preventing unauthorized access or disclosure of confidential data. These policies outline the procedures and guidelines we adhere to, to protect customer information while maintaining the integrity of the software integration and its underlying infrastructure. These policies are regularly reviewed and updated by Salesforce to ensure that they remain current and highly effective in mitigating any emerging cybersecurity risks.



Salesforce Security Policies and Procedures

Salesforce also covers many different policies and procedures to ensure our customers' data is secure. Some of these include:

**Salesforce's Corporate Trust
Commitment**

Control of Processing

Intrusion Detection

Incident Management

Physical Security

Disaster Recovery

Architecture and Data Segregation

Security Controls

Security Logs

User Authentication

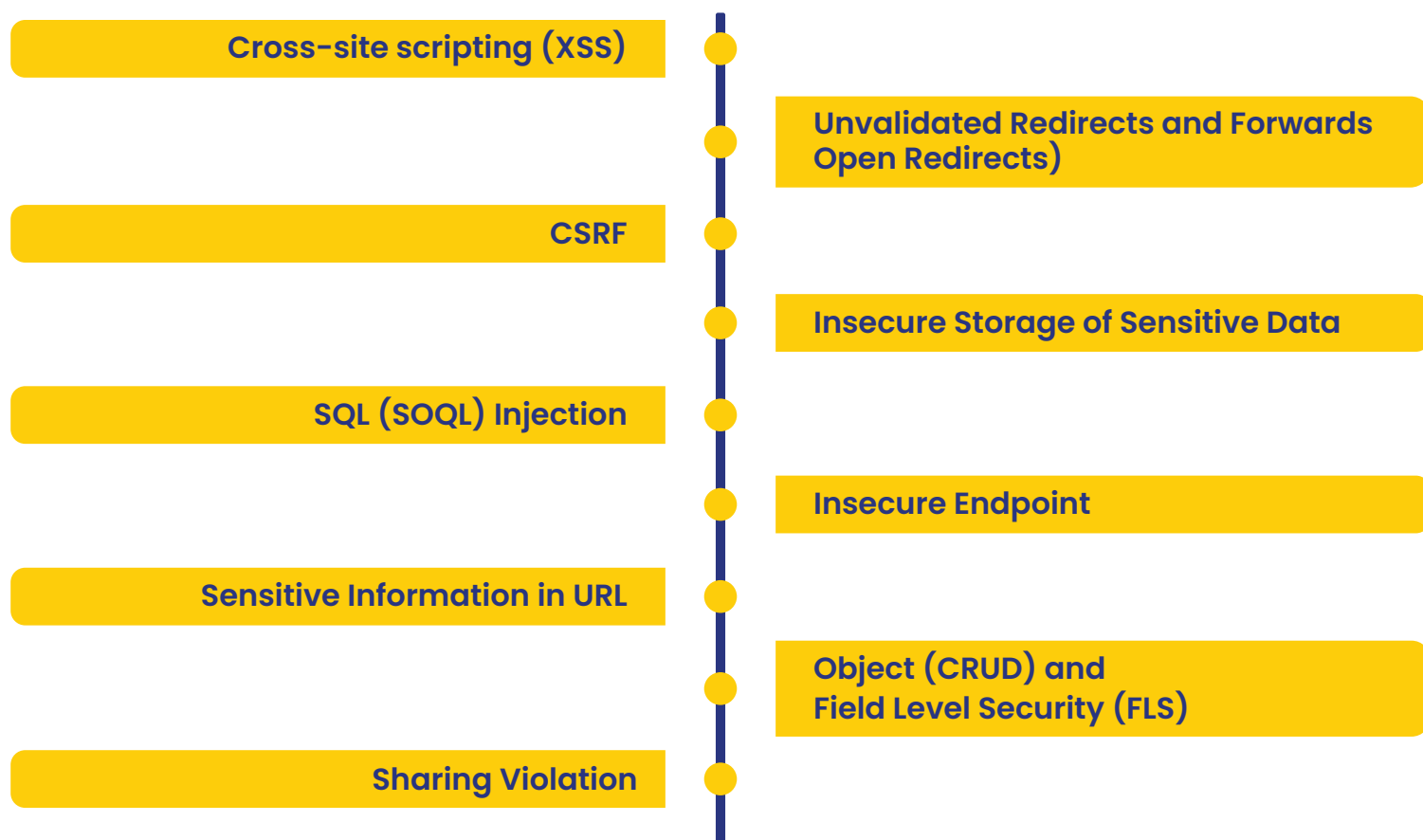
Reliability and Backup

Data Encryption

Salesforce Security Review of TargetRecruit

As a Salesforce OEM, TargetRecruit can only be listed on the Salesforce AppExchange if we pass the rigorous requirements of the Salesforce Security team. Once our app is listed, we are subject to random, on-going reviews of our product.

In addition to the Salesforce Security Review, TargetRecruit follows Salesforce Best Practices for all development in our Managed Packages as it relates to cybersecurity. This includes but is not limited to the following:

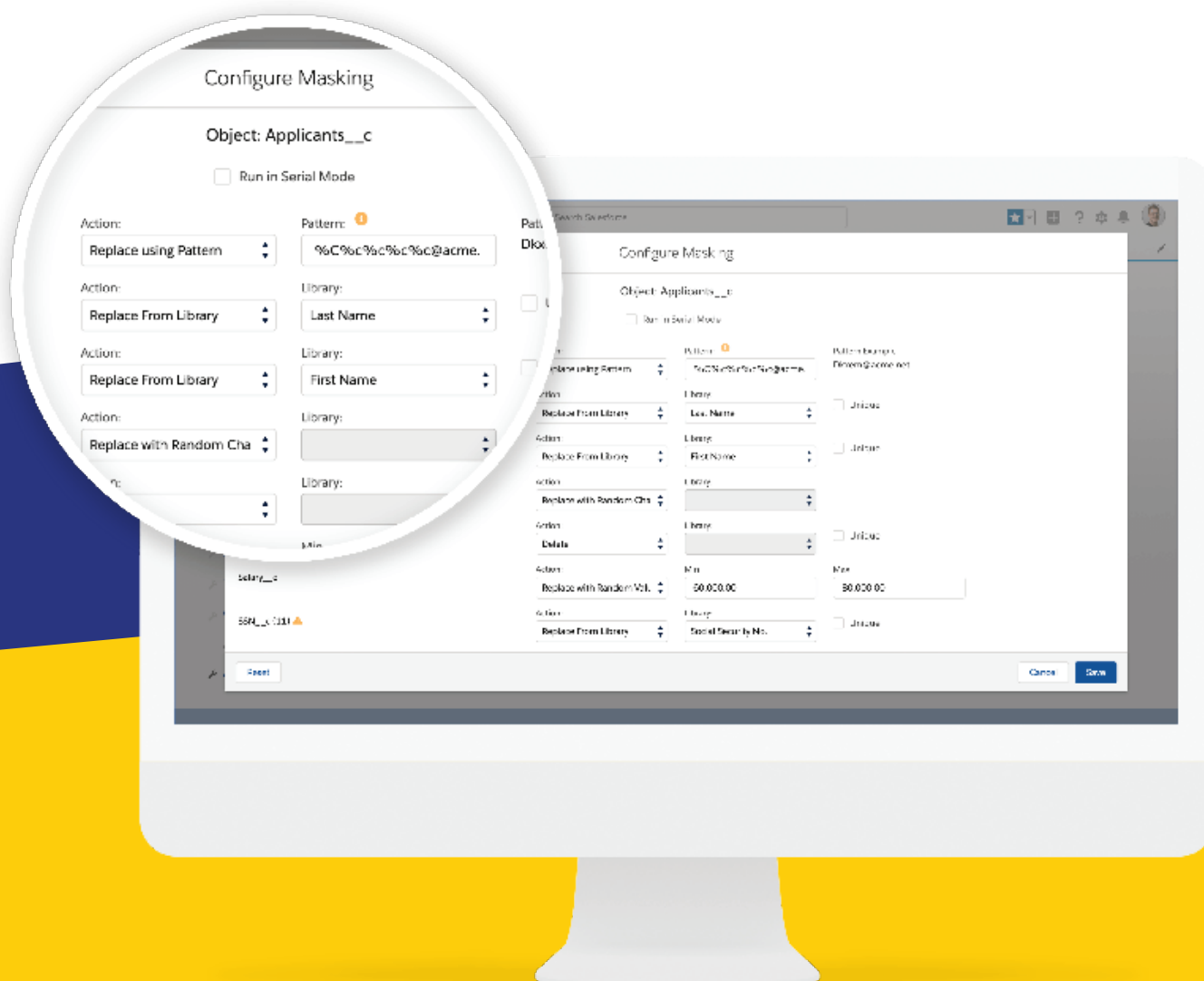


Finally, there are additional tools available to our customers from Salesforce that can provide an even extra level of security and comfort. Since we are a Salesforce OEM, we can provide these products at a significantly reduced rate to our customers.



Salesforce Data Mask

Salesforce Data Mask protects your sensitive data in Sandboxes by anonymizing or pseudonymizing data, allowing for easy compliance and reducing time spend on low-value data masking. This native solution delivers the security and performance you expect from the Salesforce platform.

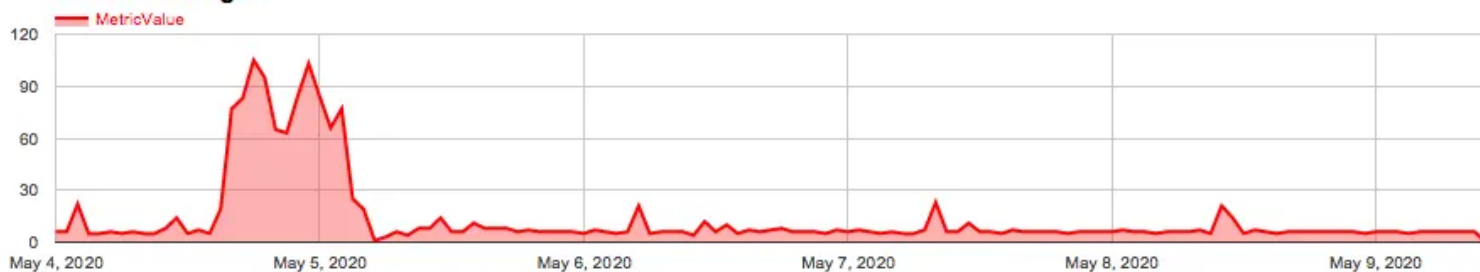




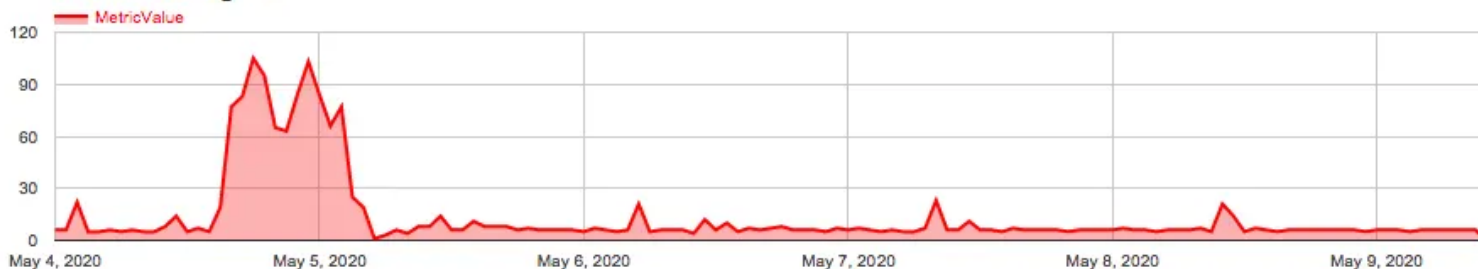
Salesforce Event Monitoring

Event Monitoring is one of many tools that Salesforce provides to help keep your data secure. It lets you see the granular details of user activity in your organization. These user activities are referred to as events. You can view information about individual events or track trends in events to swiftly identify abnormal behavior and safeguard your company's data.

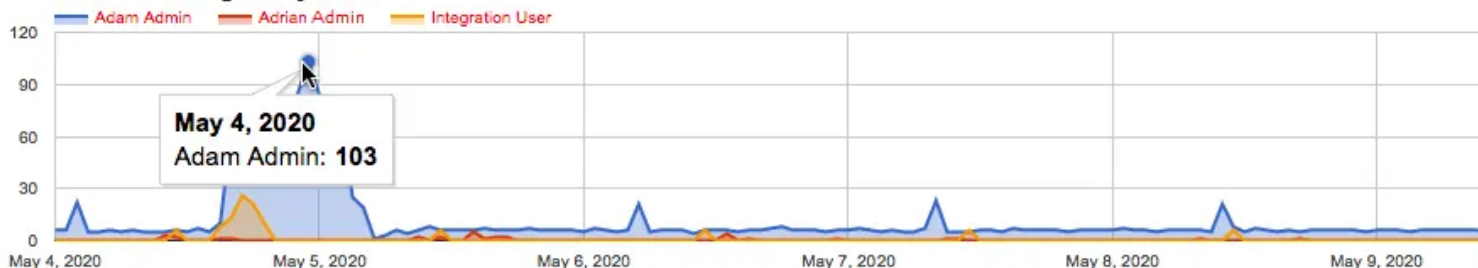
Number of Logins



Number of Logins



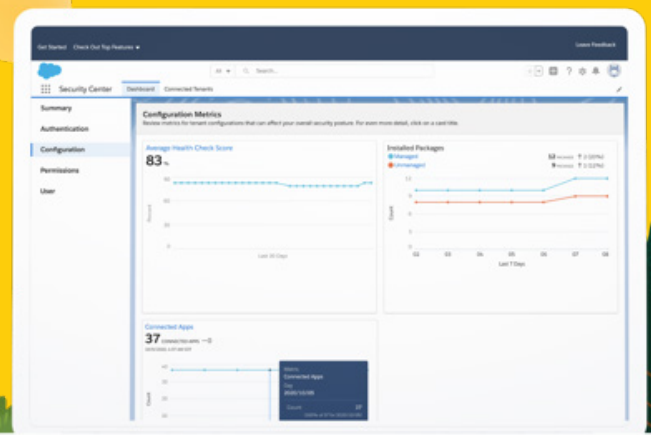
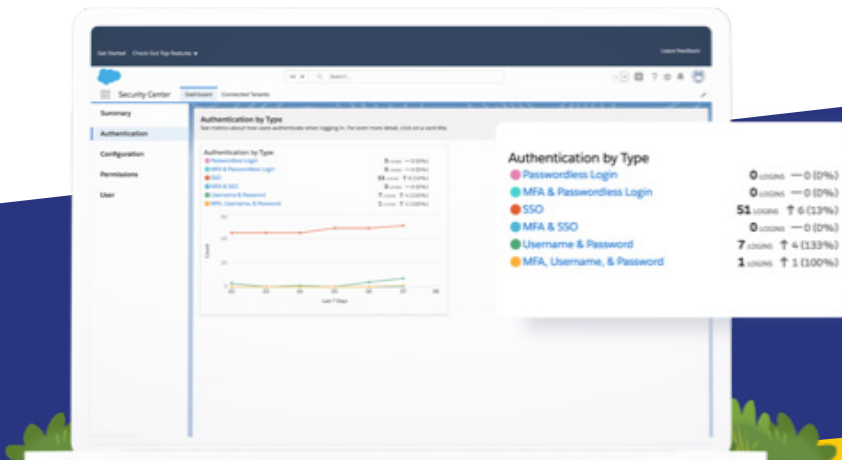
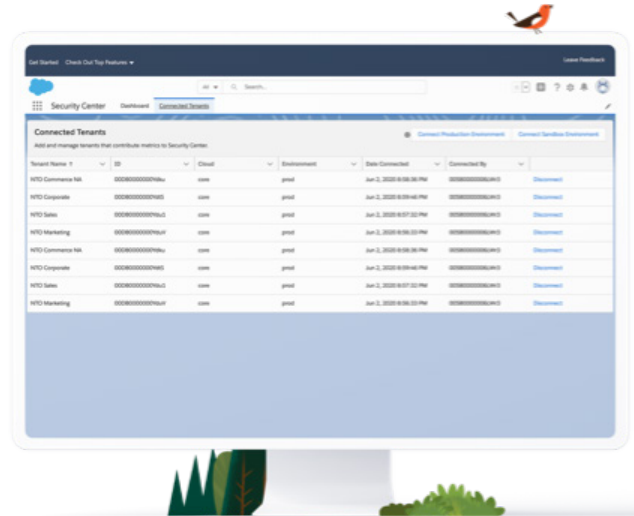
Number of Logins By User





Salesforce Security Center

Security Center provides a single view into the security configuration and controls in place across your entire Salesforce environment. With native support for both single and multi-org environments, Security Center makes it easy to understand your Salesforce security posture and simplifies how you manage your security, compliance, and governance metrics.





Salesforce Shield

Shield is a suite of capabilities that provides an extra level of security and protection above and beyond what's already baked into Salesforce. With Salesforce Shield, you can ensure the sensitive data in your Salesforce environment is safe.





Multi-Factor Authentication

When it comes to protecting your organization's data, the safety and security of your database cannot be overstated. And when it comes to security, Salesforce is second to none. TargetRecruit is built on the Salesforce, which means as a TargetRecruit customer, your organization gets all the benefits of the world's number one platform – including data security.

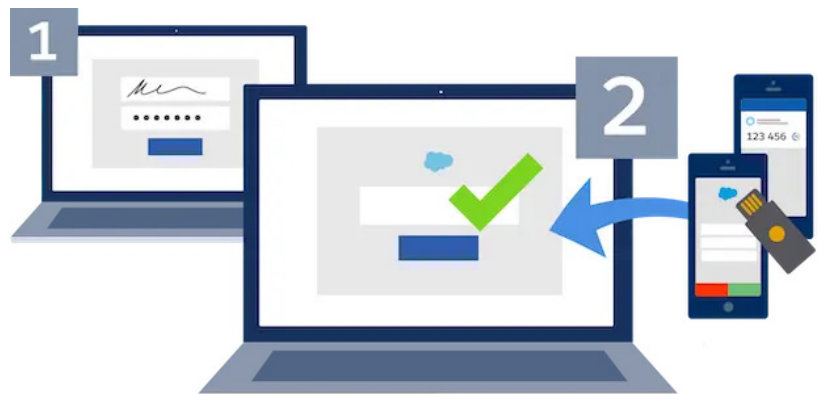
What is MFA?

When it comes to protecting your organization's data, the safety and security of your database cannot be overstated. And when it comes to security, Salesforce is second to none. TargetRecruit is built on the Salesforce, which means as a TargetRecruit customer, your organization gets all the benefits of the world's number one platform – including data security.



How does MFA work?

Salesforce has various verification methods to choose from, but each one lends itself to the same process. First, a user will input their standard, assigned credentials – typically a username and password. From there, the user is prompted to take an additional action, like inputting a unique code that is sent through a 3rd party app.





Certifications and Audits

In addition, Salesforce also utilizes some of the most advanced security protocols available.



The information contained in this document, in-part, contains statements about our solution and security measures, based on third-party information. The above information is from sources believed to be reputable and up to date, however it should never be solely relied upon when making any purchasing decisions and TargetRecruit assumes no responsibility for its accuracy.