

Salesforce Summer '22 Release:

What's in it for you? _____

Dear Valued Customer,


We are delighted to inform you that the Salesforce Summer '22 Release is available and has new enhancements and updates to the platform.

TargetRecruit is built on Salesforce and we want to ensure that you have the most up-to-date information to best use our solution.

This document highlights some of the new updates to Salesforce that you can leverage. Please find the complete Salesforce Summer '22 Release document [here](#).

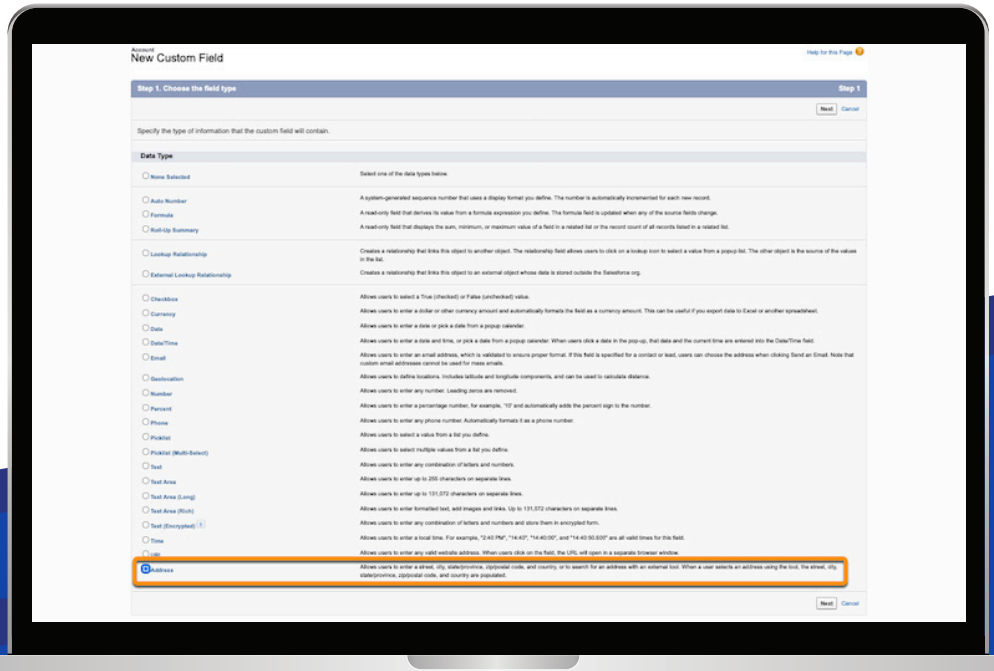
Thank you,
The TargetRecruit Team

Please note: Some of the features or updates may not be available for certain license types. Please refer to the detailed [Summer '22 Release document by Salesforce](#) for license and other technical information.

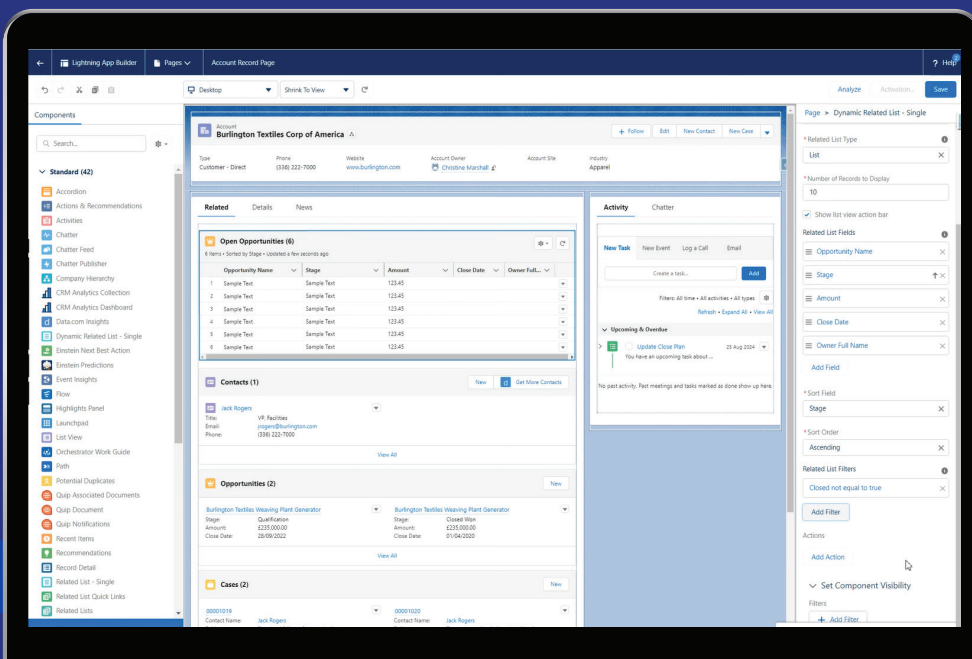
The bottom of the page features a decorative graphic consisting of several overlapping, diagonal, triangular shapes in various shades of blue, creating a modern, abstract design.

Custom Address Field

A custom address field that functions in the same fashion as the standard address field has been a much needed feature for years! In super exciting news, Address as a Custom Field is in Beta from the Summer '22 release.



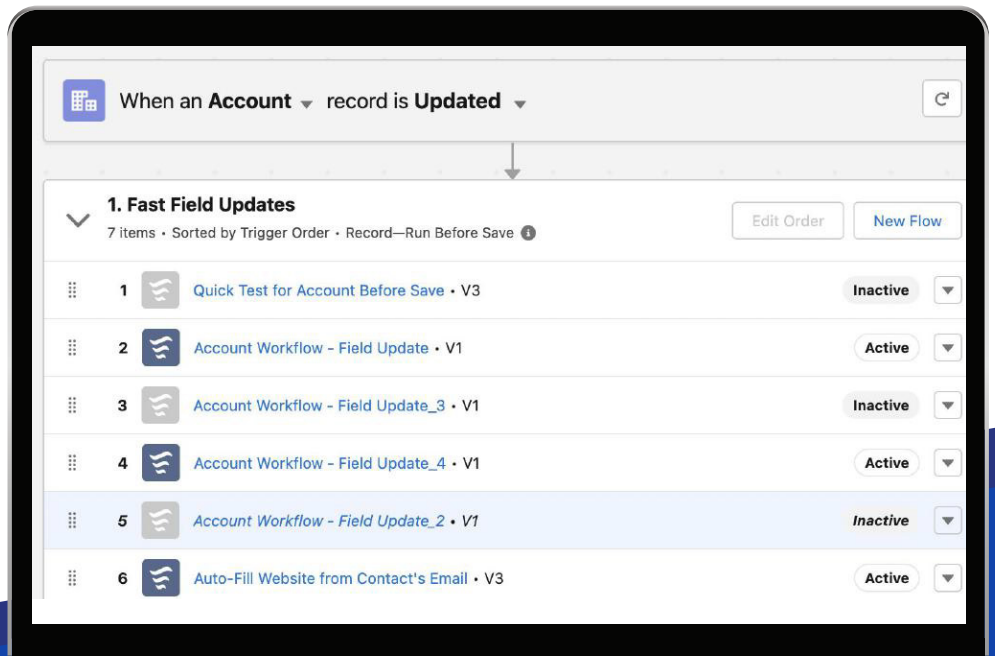
Customize and Filter Related Lists in the Lightning App Builder



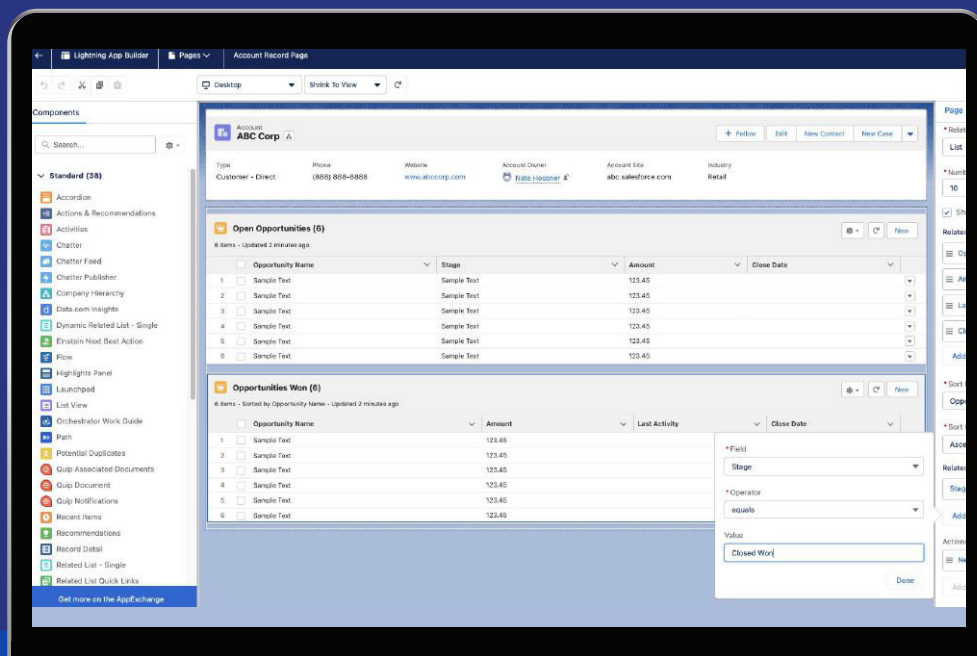
Dynamic related lists add a new component to Lightning pages – 'Dynamic Related List – Single'. Dynamic Related Lists give you the ability to create custom related lists that can be filtered to display only when particular criteria are met. Trusted IP ranges are included.

Flow Trigger and Screen Enhancements

You can now access Flow Trigger Explorer from Object Manager and reorder your flow using drag-and-drop. New formula editor in entry criteria is now supported. For Screen Flows, admins can now add section headers that can be expanded and collapsed. And Screen Flows can now be embedded in Lightning Web Components.



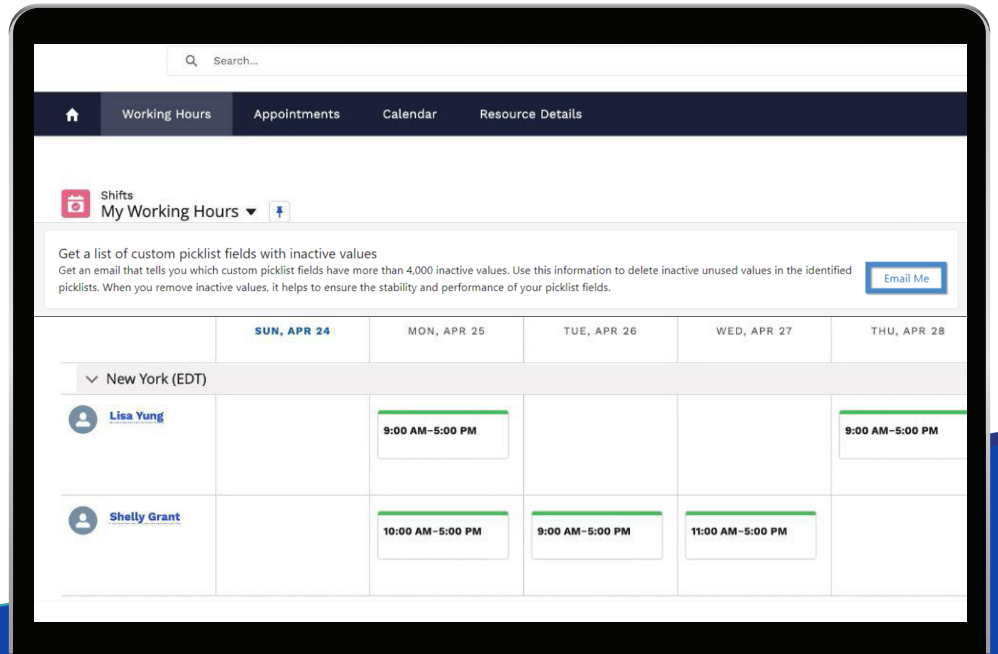
Lightning App Builder Enhancements



Salesforce has added filterable related lists to Lightning App Builder, which now has the full functionality of Page Layout Editor and more, plus the ability to filter related lists to show only the most relevant information to your users. Trusted IP ranges are included.

Salesforce Scheduler: Shift Rostering Enhancements

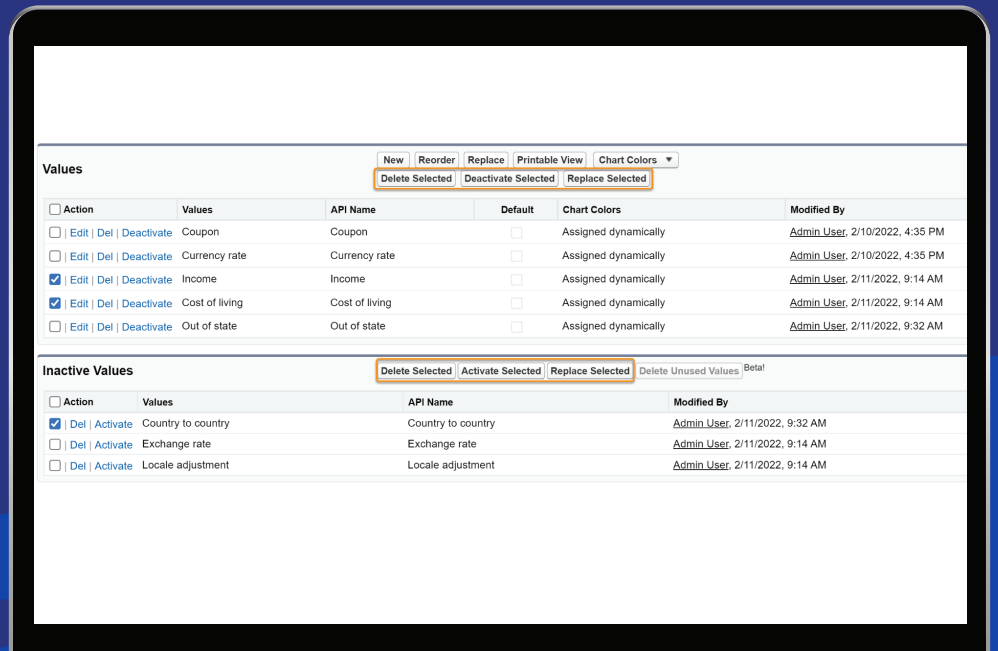
Allow territory managers and resources to visualize the working hours of all resources and territory holidays to track appointment coverage.



Picklists

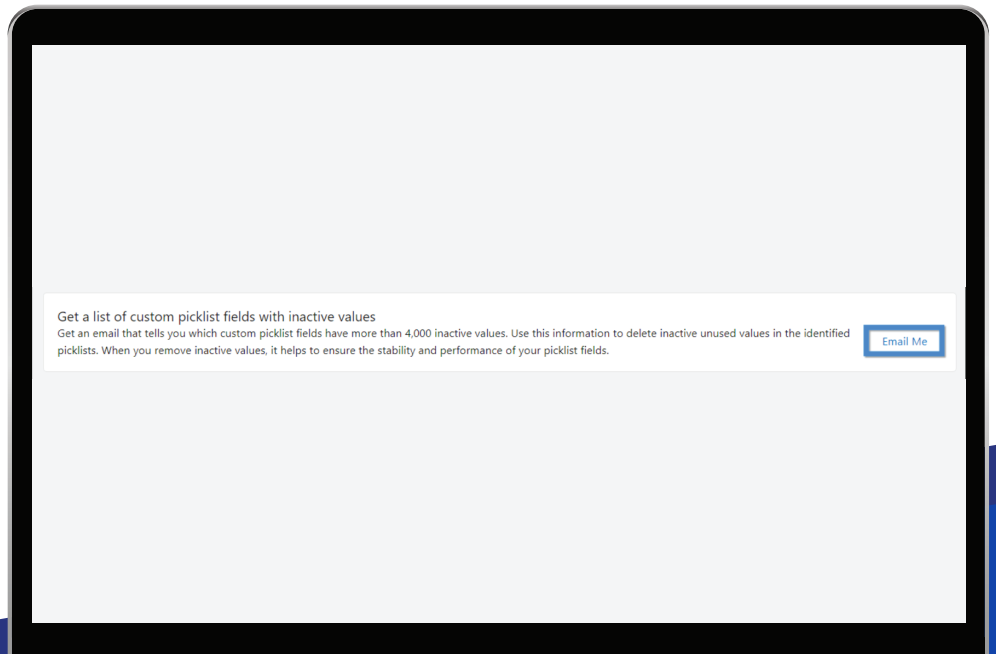
Bulk Manage Picklist Values (Beta)

This gives an ability to delete, activate, deactivate, or replace multiple custom picklist field values at once, instead of one at a time.



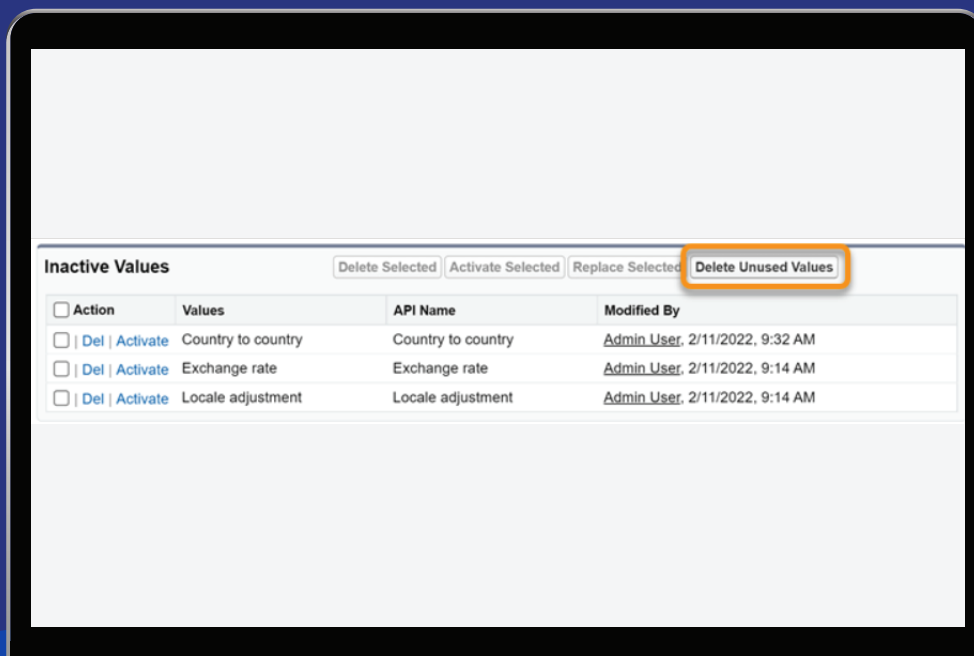
Get a List of Custom Picklist Fields with Inactive Values

This little time-saving trick also improves system performance; you can now opt to receive an email when custom picklist fields have more than 4,000 inactive values, whereas before, you would have had to check each field individually!



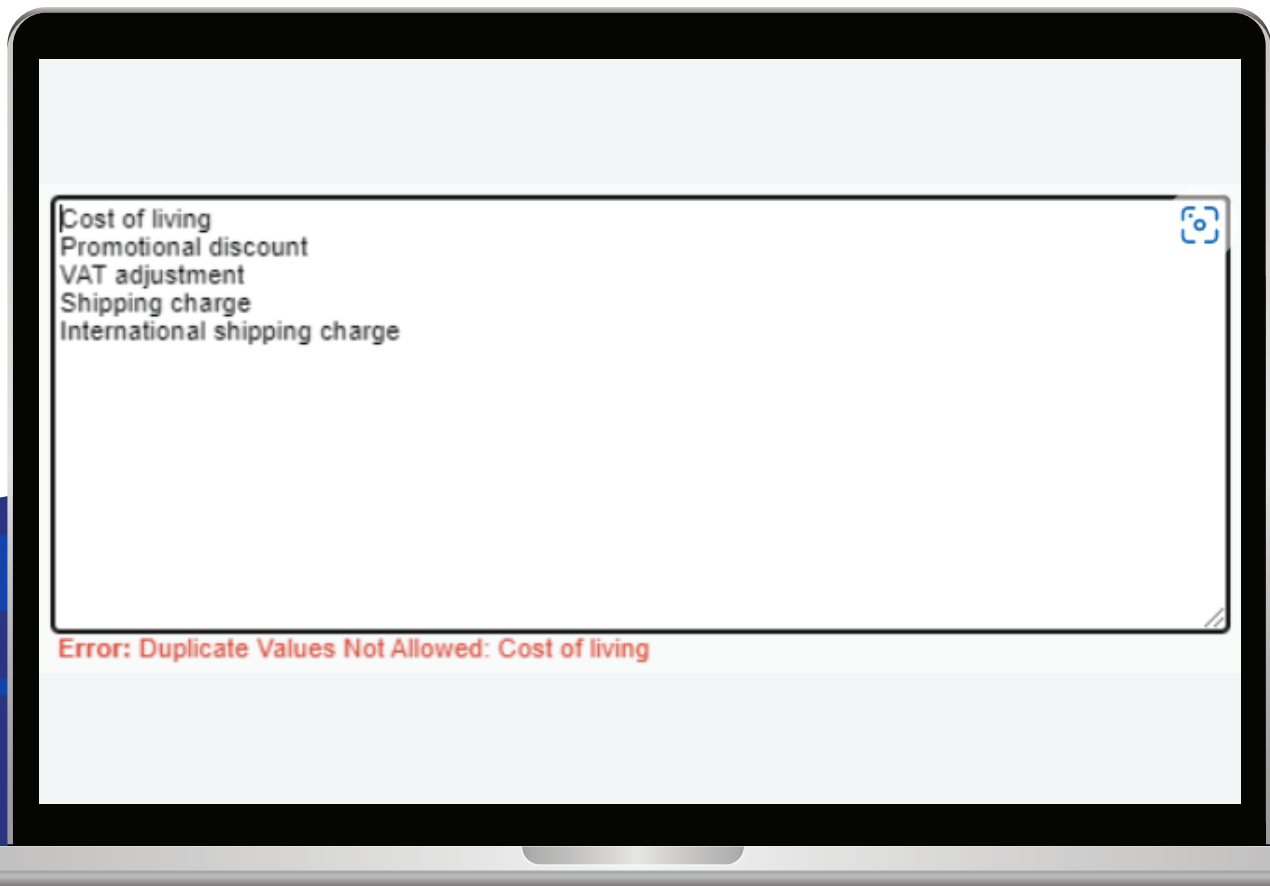
Clean Up Inactive Picklist Values (Beta)

You can now bulk delete inactive picklist values in custom picklist fields instead of having to do it one by one!



Learn Which Picklist Values Are Duplicates

Historically, if you tried to add a new picklist value that already existed and was therefore a duplicate, you'd just get a warning that one of your new values was a duplicate.

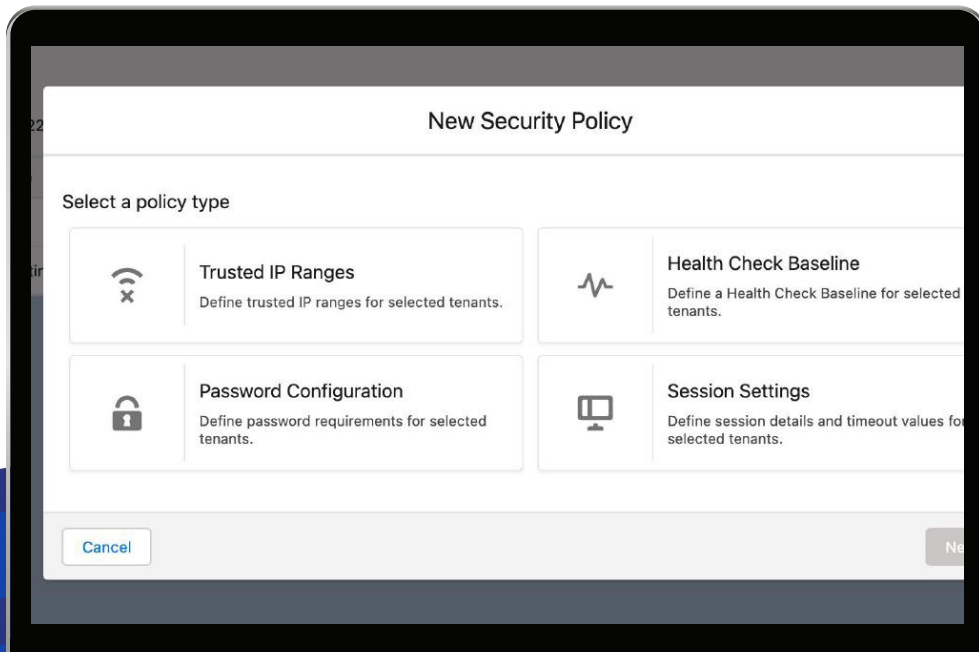


Enable Person Accounts Without Contacting Salesforce Support

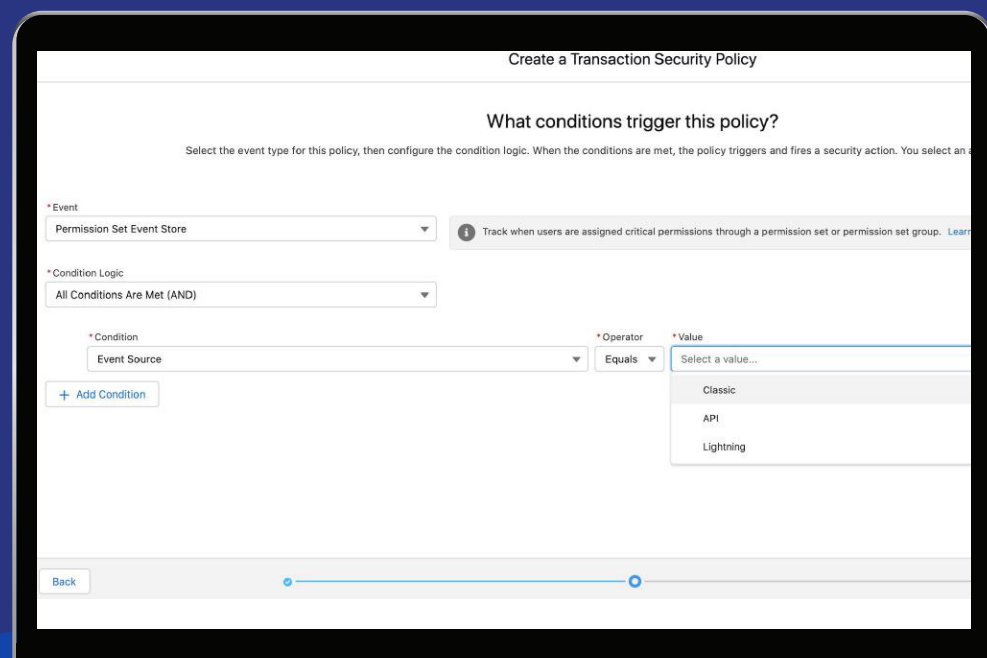
Salesforce has introduced a guided setup to self-enable Person Accounts. Historically, you had to contact Salesforce Support to get Person Accounts enabled. Before you excitedly check out the new setup wizard, remember that Person Accounts cannot be disabled! So only enable them after doing your due diligence...

Security Policy Management

If you are managing multiple orgs, Security Center now lets you define central security policies and deploy them to all of your orgs with clicks. For this release, Health Check Baselines, Password Policies, Session Settings, and Trusted IP ranges are included.



Event Monitoring Enhancements



The all-new Permission Set Event in Event Monitoring gives you granular visibility into Permission Set modifications. With this new event, use Transaction Security to prevent critical permissions from being maliciously or accidentally granted.

External Objects Enhancements

With Restriction Rules for External Objects, you can now limit which records a user can see in the external system based on a rule the administrator writes.



Customization

External Services Enhancements

Actions created through External Services have been exposed exclusively for invocation through Flow or Einstein Bots. Now developers can access these External Services registered actions directly from Apex in a type-safe way.

The screenshot shows the Developer Console with Apex code and the External Services Setup page. The Apex code is as follows:

```
1 // Instantiate the External Services Apex class
2 ExternalService.bankService service = new ExternalService.bankService();
3 // Set request
4 ExternalService.bankService.getAccount_Request request = new ExternalService.bankService.getAccount_Request();
5 request.accountName = 'KevinWong';
6
7 try {
8     // Make callout
9     ExternalService.bankService.getAccount_Response response = service.getAccount(request);
10    system.debug('200 response: id --> ' + response.Code200.id);
11    system.debug('200 response: available balance --> ' + response.Code200.availableBal);
12 } catch (ExternalService.bankService.getAccount_ResponseException exc) {
13    system.debug('404 response: error message --> ' + exc.Code404.errorMessage);
14 }
```

Below the code is the 'SETUP External Services' page. It contains a table with the following data:

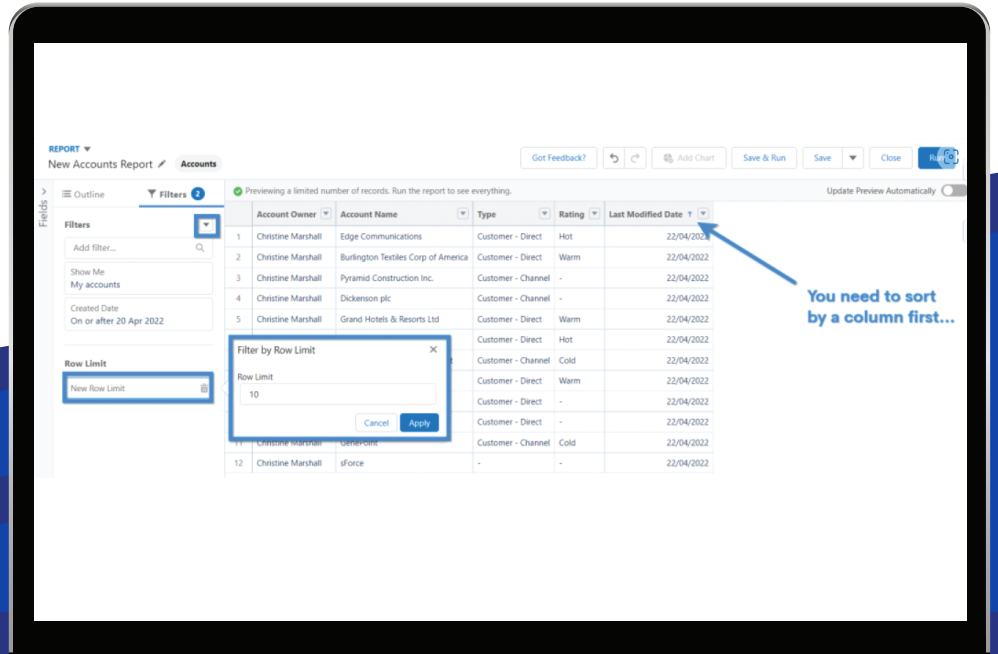
Service name	Type	Description	Named credentials	Schema URL	Action type
BankService	OpenApi		Bank	/accounts/schema	External Service action

Below the table is an 'Actions' section.

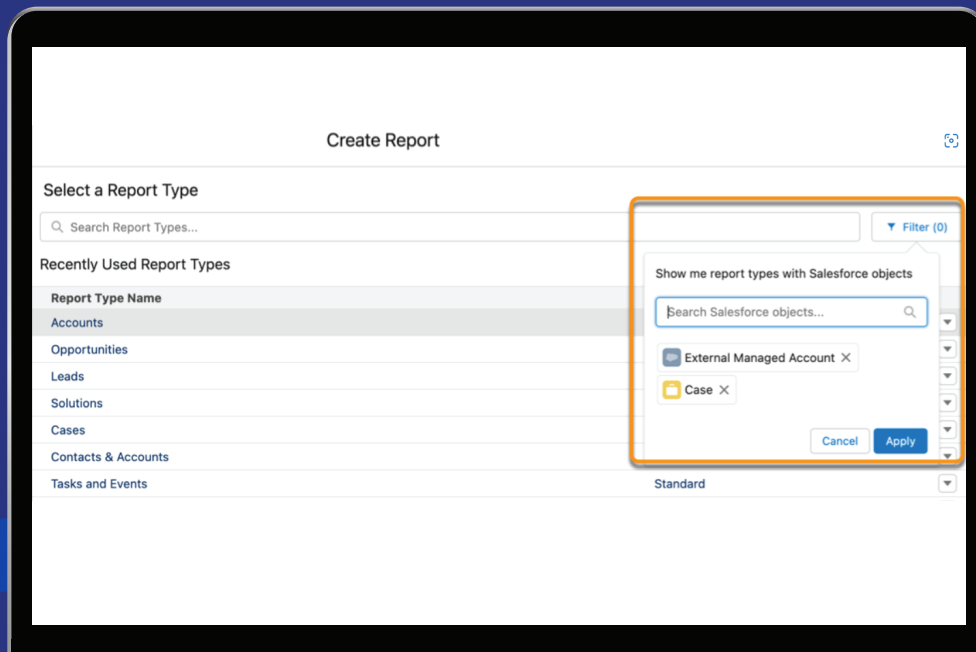
Reports and Dashboards

Limit Results in Tabular Reports

You can now set a row limit in a tabular report in Lightning Experience! Once a row limit has been set, you can also use a tabular report in a dashboard. Interestingly, you'll find the option to add a row limit in the Filters tab.



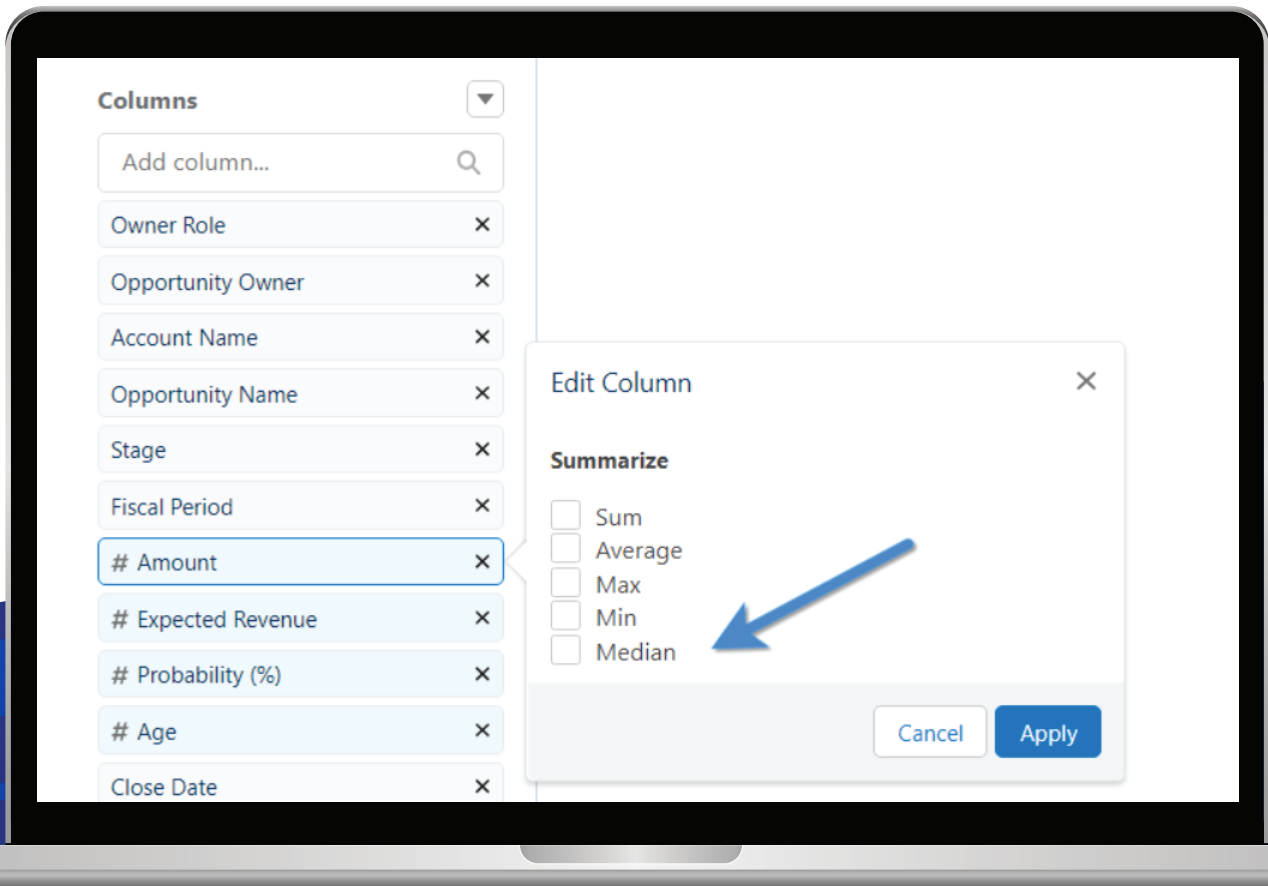
Create Reports Based on Selected Salesforce Objects (Beta)



Fed up of selecting a report type, only to discover it doesn't contain the object or objects you need? Well, no more! You can now filter on specific objects when creating a new report.

Summary Functions Now Include Median

When summarizing fields you can now select the median function.



Edit Multiple Fields on the Report Run Page (Generally Available)

Inline editing for reports just gets better and better with every release. You can now edit multiple fields and records without needing to rerun your report. This is a huge time saver and brings greater feature parity between list views and reports.